

## Brooks Expert Support Tool (BEST) version 5.16.0.0 Quick Installation/Upgrade Guide

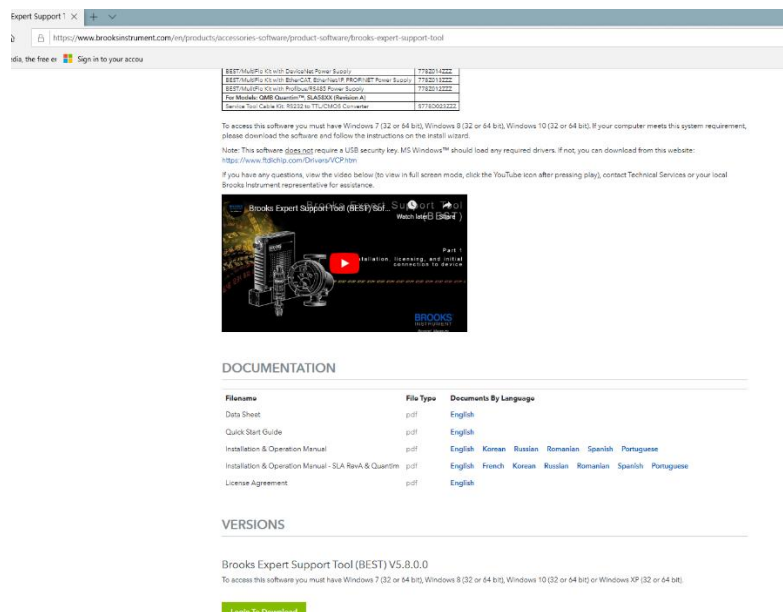
March 13, 2026

See also the BEST user Manual for more details about installation.

Your exact versions shown may vary.

Your exact screen appearances may vary. Your versions may vary.

### 1.) Download the Brooks Expert Support Tool from the Website and save file to your hard drive.



Expert Support 1 x

https://www.brooksinstrument.com/products/accessories-software/product-software/brooks-expert-support-tool

Sign in to your account

Product Name	Version
BEST MultiPLi-03 with DataLink Probe - Supply	7192010222
BEST MultiPLi-03 with Edge-CAT, Ethernet/PROFIBET Power Supply	7192010222
BEST MultiPLi-03 with Profibus/RS485 Power Supply	7192010222
Doc Manual - QMS Quantum - SLASER (Windows 8)	677850010222
Service Tool Cable Kit - 8022 to TT-01MS0 Converter	677850010222

To access this software you must have Windows 7 (32 or 64 bit), Windows 8 (32 or 64 bit), Windows 10 (32 or 64 bit). If your computer meets this system requirement, please download the software and follow the instructions on the install wizard.

Note: This software does not require a USB security key. MS Windows™ should load any required drivers. If not, you can download from this website: <http://www.fidichip.com/Drivers/VCP.htm>

If you have any questions, view the video below (to view in full screen mode, click the YouTube icon after pressing play), contact Technical Services or your local Brooks Instrument representative for assistance.

Brooks Expert Support Tool (BEST) Support  
Part 1: Installation, Uninstalling, and Initial Configuration (10:27:22)

#### DOCUMENTATION

Filename	File Type	Documents By Language
Data Sheet	pdf	English
Quick Start Guide	pdf	English
Installation & Operation Manual	pdf	English Korean Russian Romanian Spanish Portuguese
Installation & Operation Manual - SLA Riva & Quantm	pdf	English French Korean Russian Romanian Spanish Portuguese
License Agreement	pdf	English

#### VERSIONS

Brooks Expert Support Tool (BEST) V5.8.0.0

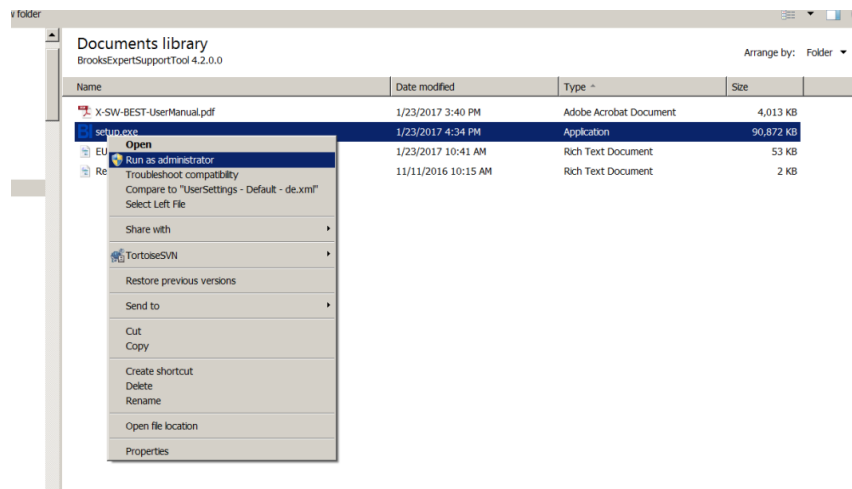
To access this software you must have Windows 7 (32 or 64 bit), Windows 8 (32 or 64 bit), Windows 10 (32 or 64 bit) or Windows XP (32 or 64 bit).

[Click To Download](#)

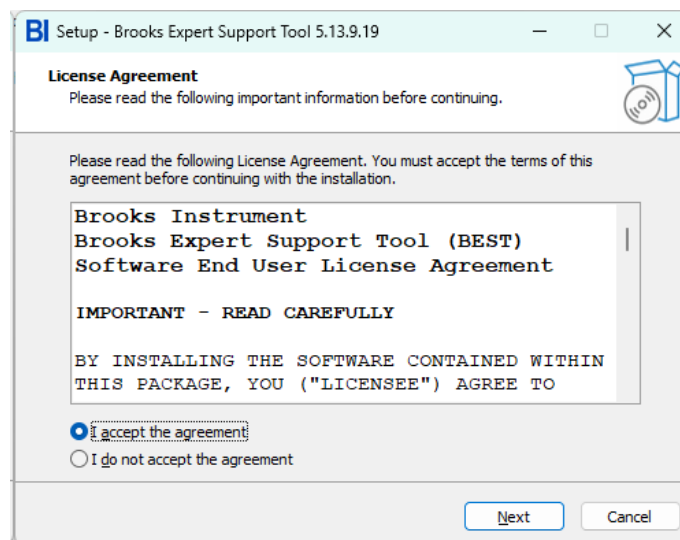
Link: <http://www.brooksinstrument.com/products/accessories-software/product-software/brooks-expert-support-tool>

### 2.) Unzip the \*.zip file on your local computer's hard drive.

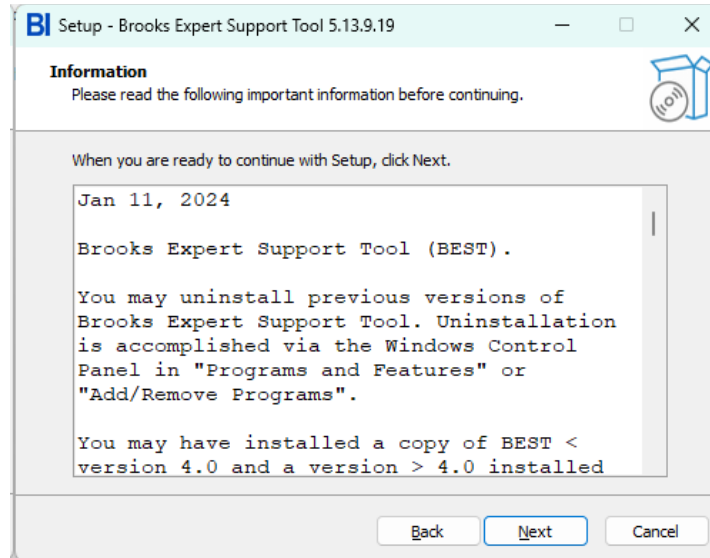
3.) Execute the setup.exe (right click on the executable and run as administrator):



4.) Read and accept the license agreement and click next:

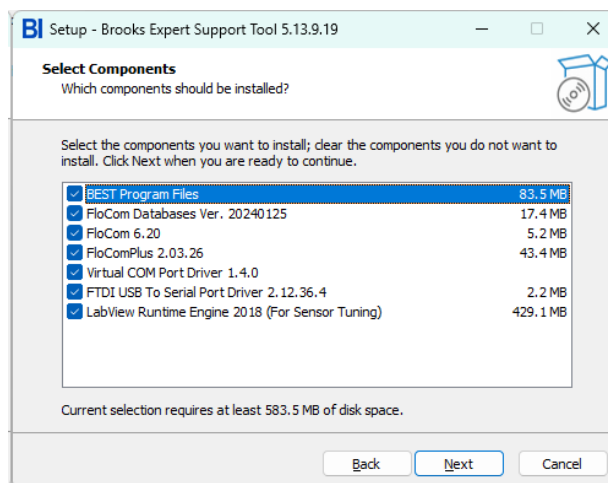


5.) Read the text from the ReadMe file, then click Next:

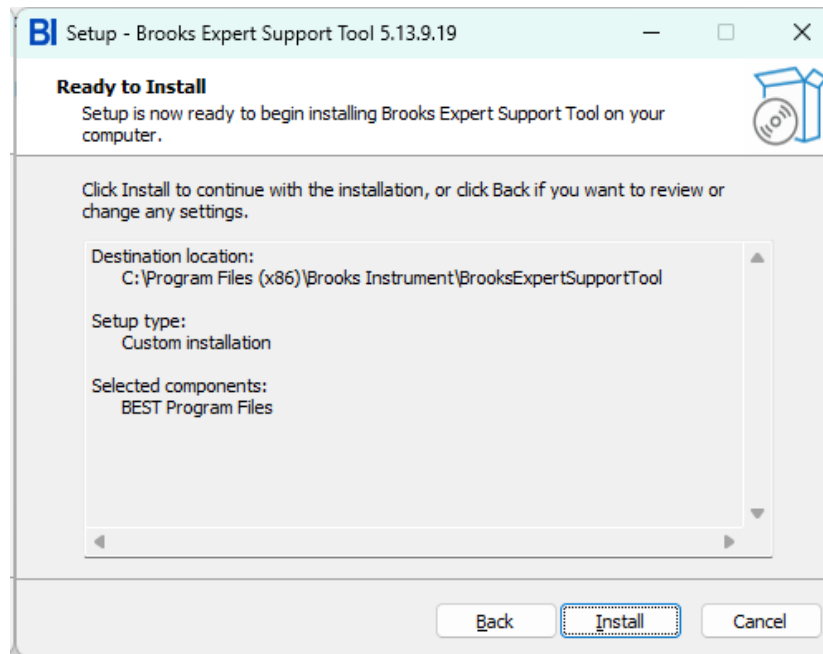


6.) If you need to maintain an existing version of FloCom (such as with CopyExact), please see additional instructions in the user manual. Deselect Virtual COM Port Driver if you don't need it (see user manual). This is required for use with the VDM300 and GP200 devices. Also, note that the Labview Runtime engine is only required to be installed if you intend to do sensor tuning. It can also be installed at a later time.

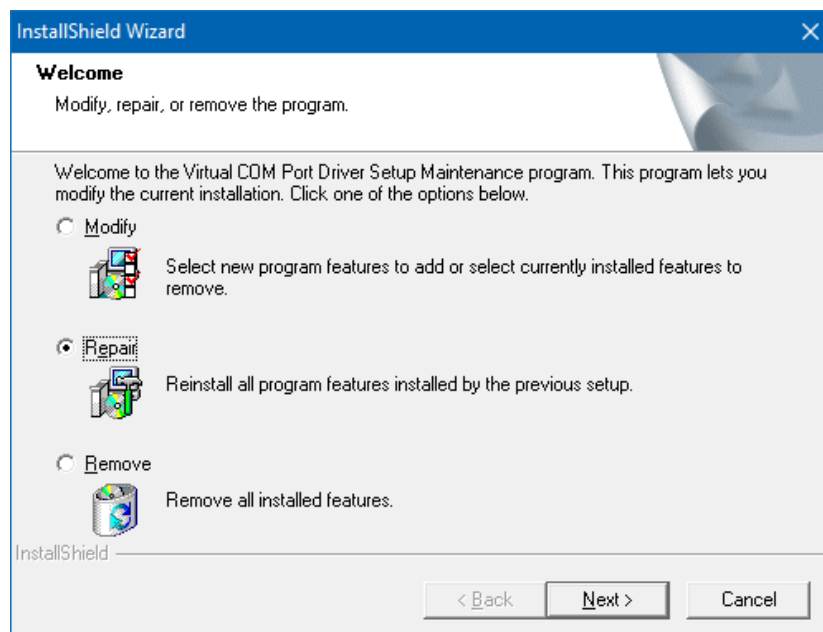
Click Next.



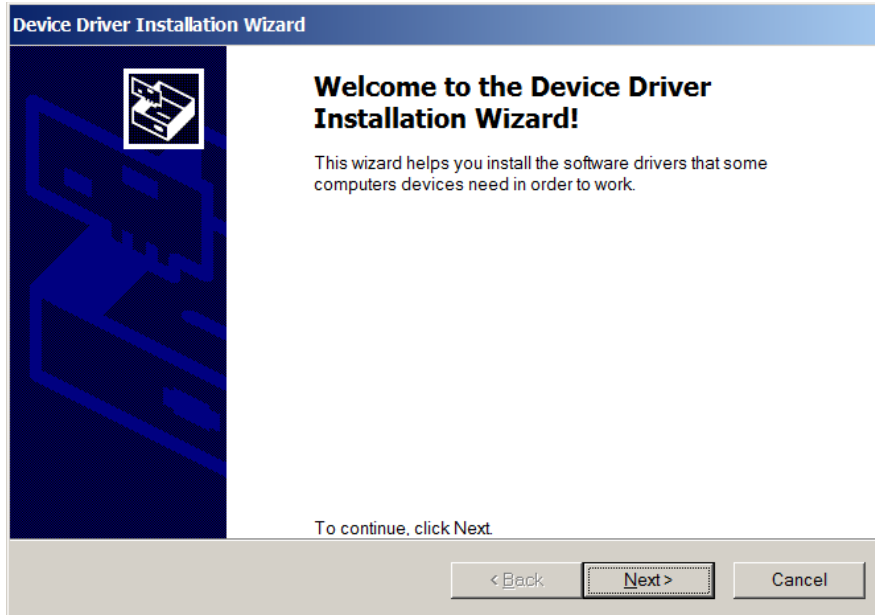
7.) Click Install.



8.) If the maintenance window appears, click repair:



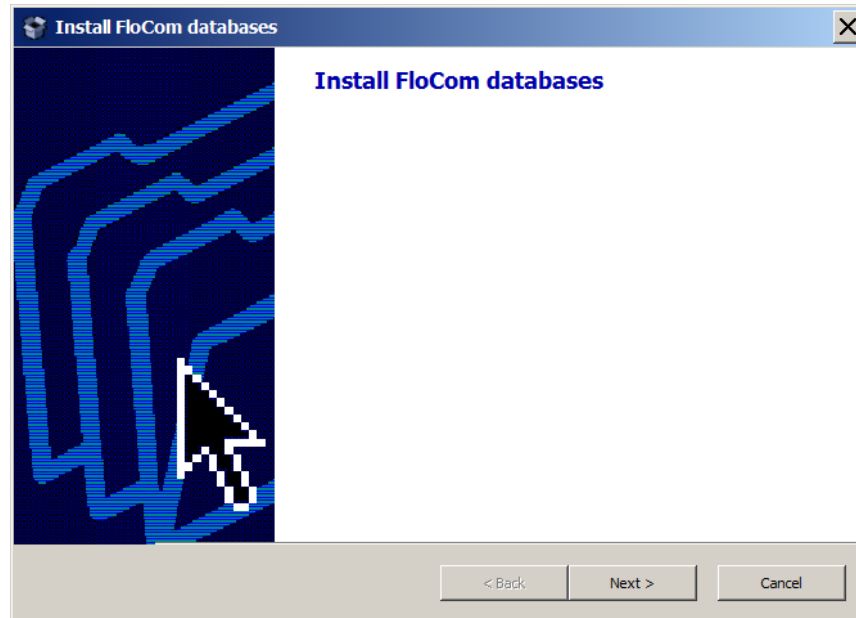
9.) If the driver installation windows appears, click Next:



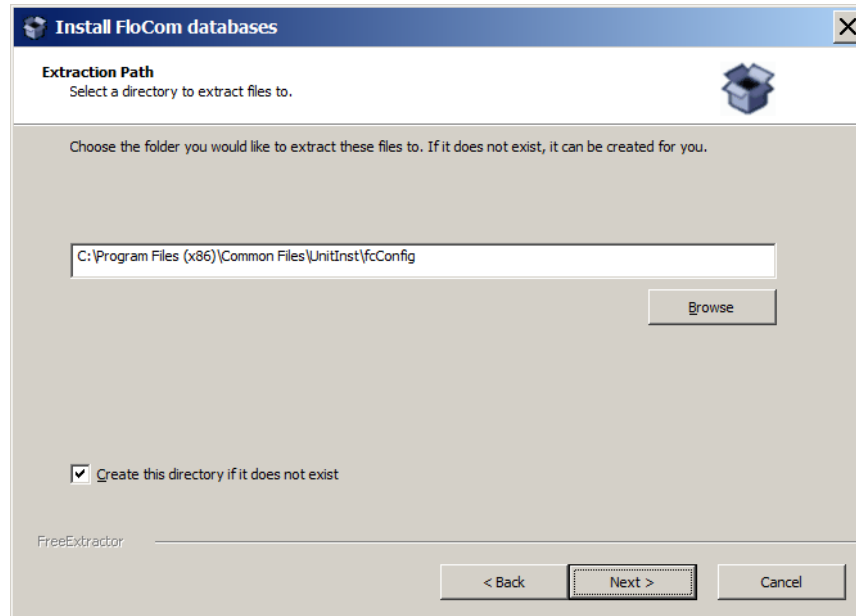
10.) When the driver installation completed window appears, click Finish:



11.) Click Next to install FloCom databases:



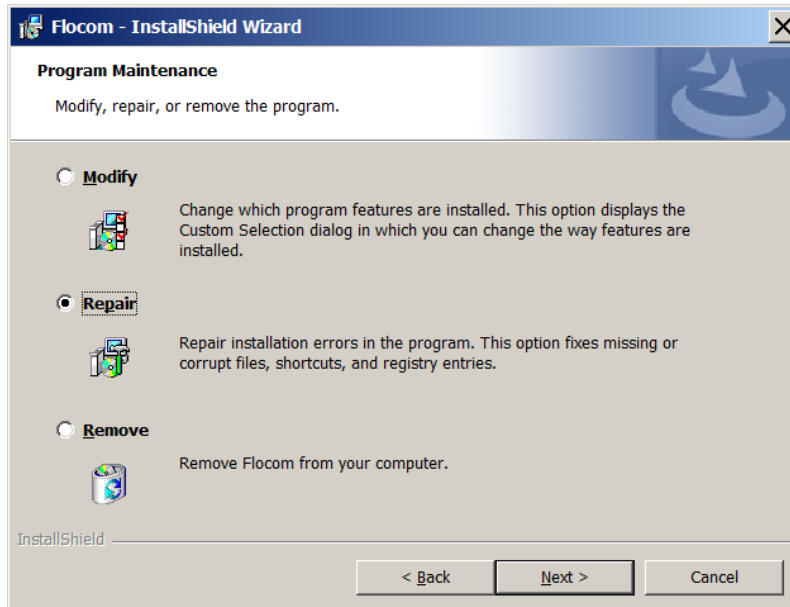
12.) Click Next (do not change the install folder):



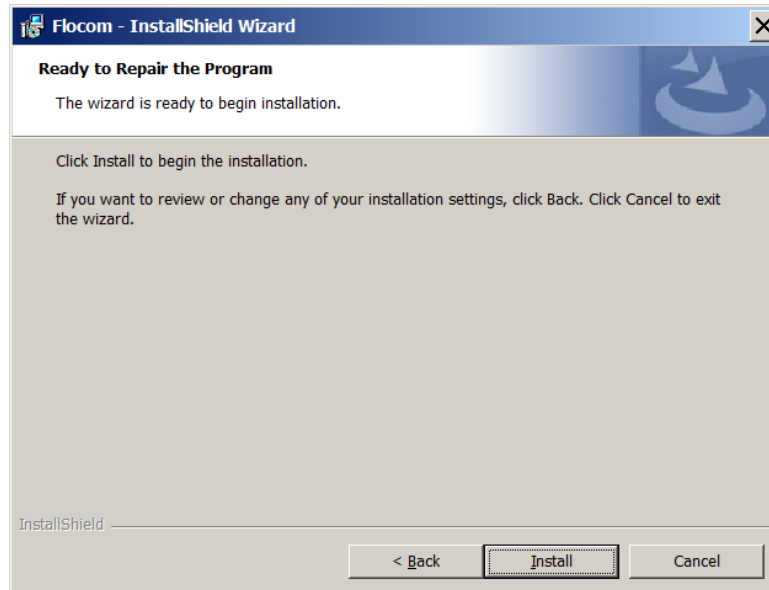
13.) Click Next to install FloCom:



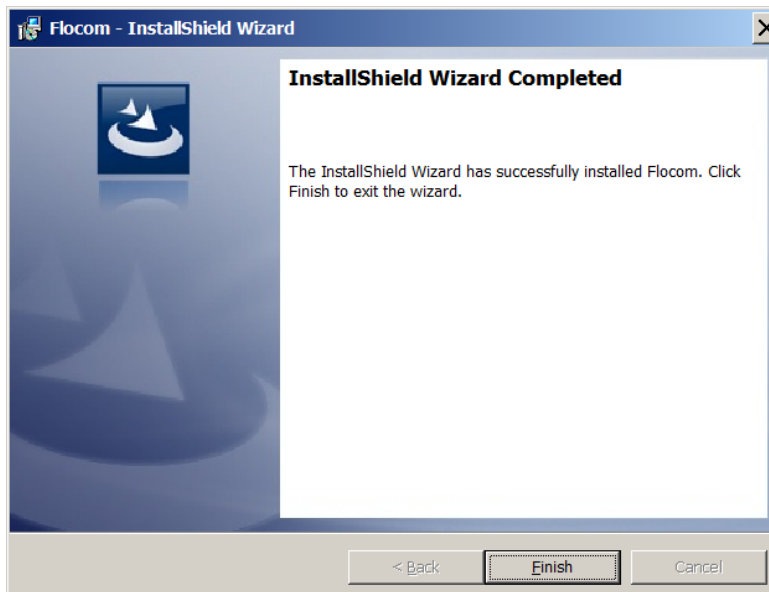
14.) IF the maintenance screen appears, click Repair and then Next:



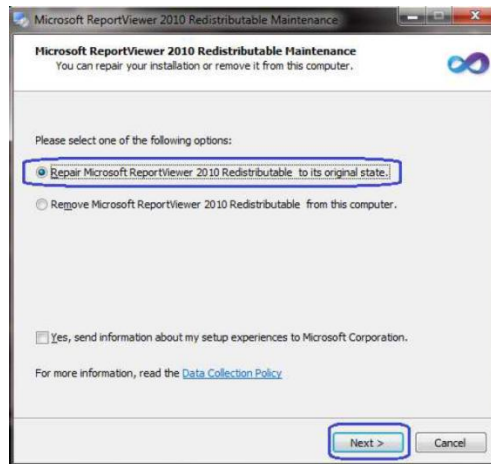
15.) Click Install:



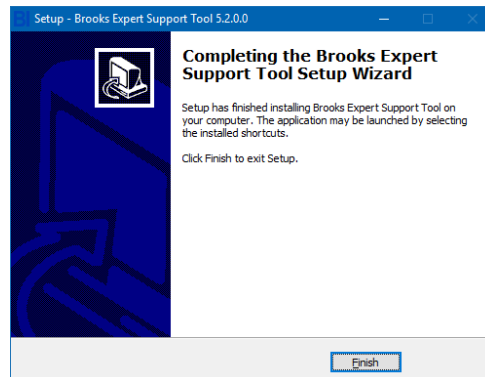
16.) Click Finish:



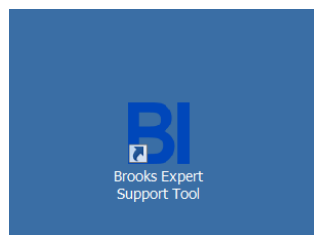
17.) If this window appears, click repair and Next:



18.) Click Finish to complete the installation:



19.) A desktop short cut will be added to your Windows desktop. Double click it to start BEST:



20.) See the user manual for instructions to connect your device and use BEST with it.